

TAKE FIVE



KNME-TV5
is a Community Service
of the
University
of New Mexico
and the
Albuquerque
Public Schools

KNME BOARD OF DIRECTORS

Chairman
Phillip Gonzales, APS
David Colton, UNM
Tony Hillerman, UNM
Marvin Johnson, UNM
Joe Jelso, APS
Marilyn Zanetti, APS
Maureen Luna, Albuquerque Citizen

KNME-TV STAFF

Director of Broadcasting
General Manager
Jon Cooper
Director of Development
Martha Day
Director of Engineering
Ted Lester
Manager—Technical Planning
Robert Gordon
Program Manager
Shirley Casados
Manager—Program Production
Rick Johnson
Public Information Supervisor
Gregory Petersen
Manager—Design Services
Tom Miles
Underwriting Services Coordinator
Julie Wenk
Membership Services Coordinator
Carol Kyle
Program Schedule Coordinator
Christie Dorcas
Senior Producer—
Public/Cultural Affairs
Hal Rhodes

TAKE FIVE STAFF

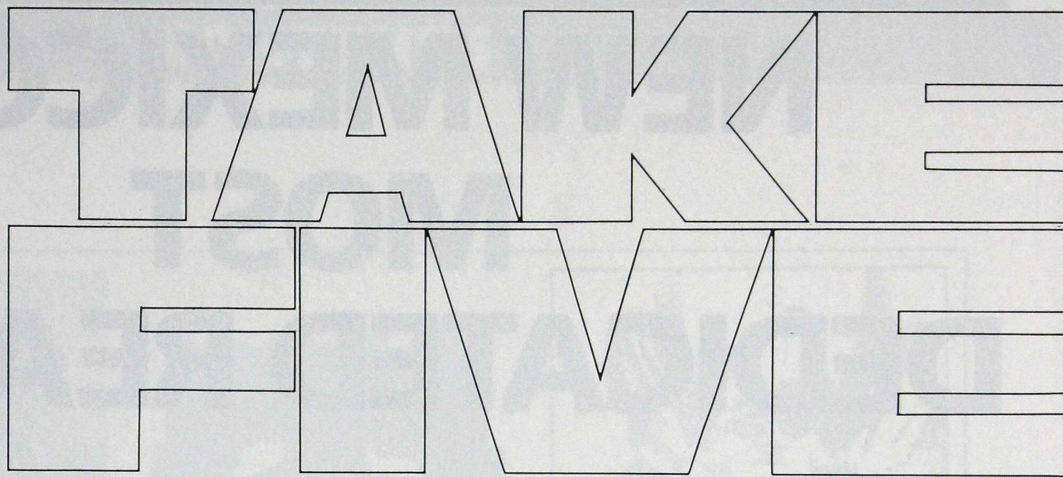
Managing Editor
Gregory Petersen
Design, Layout & Graphics
Joe Toulouse
Stacy Innerst
Printing
UNM Printing Plant

Take Five is published monthly by KNME-TV at 1130 University Blvd., N.E., Albuquerque, NM, 87102-1798. KNME-TV is a non-profit organization operated and licensed by the University of New Mexico and the Albuquerque Public Schools. The annual **Take Five** subscription rate is \$25.00. Costs of publication are \$5.23 for twelve issues. Profits from the subscription rate are used to support the services of public television station KNME-TV.

Application to mail at Second-Class Postage rates is pending at Albuquerque, New Mexico.

Send change of address and membership inquiries to KNME-TV, 1130 University Blvd., N.E., Albuquerque, NM, 87102-1798.

Copyright 1985 by KNME-TV. All rights reserved. Portions may be reprinted with prior written approval by KNME Television.



VOL. 7, NO. 1

KNME-TV

JANUARY 1985

Welcome one and all to the new improved version of the KNME-TV program guide. We've retained many of the features of the previous format, redesigned some others and have increased feature material greatly. We hope that our current members will be pleased with this new look. If you are receiving *Take Five* for the first time, a brief word of explanation.

Take Five is published monthly and sent to all members contributing \$25.00 or more to Channel 5. The guide is so designed that viewers can read through the entire month of Channel 5 listings and thereby better plan their television viewing. You can mark your calendar so you won't miss that special performance, documentary, how-to show, movie, or whatever program catches your fancy. Additionally, the guide points out specials of particular note, has feature-length articles about programs, contains general news about the station, a schedule of weekly repeats of programs and much more. Please take a moment and page through *Take Five* and become familiar with your personal guide to the best in television.

Along with a the new look for the guide, we are launching a unique promotional campaign. For details of this exciting project, see the "Developments" department in this issue, where you can also learn about the tremendous success of our December "Quiet/Live Drive."

With the new year comes a great new program on TV5. **Austin City Limits** begins its 10th foot-stompin' season on public television with a one-hour performance by The Oak Ridge Boys, The Texas Playboys and Gary P. Nunn. **Mystery!** continues with a new three-part story of calculated greed called "Praying Mantis." Everybody's favorite Time Lord **Dr. Who** travels to a new dimension of time and space and in a new form as TV5 presents all-new feature-length stories of the Doctor starring Peter Davison.

The **National Geographic Specials** make their season debut with a very close-up look at the tiger. **Smithsonian World**, with host David McCullough, goes to the depths of the ocean to find life where sunlight never penetrates.

Also this month, you'll see new episodes of **Nova**, **Nature**, **American Playhouse**, **Wonderworks** and **Frontline**.

In the coming months, KNME-TV will premiere several all-new series including new performances in **The Compleat Gilbert & Sullivan** series; **Discovery**—a four-part series on the sciences hosted by Peter Graves; **Jean Shepherd's America**,—a whimsical and affectionate look at Americana; Five new productions in the **Live From the Met** series; **The Living Planet**,—David Attenborough returns with a sequel to the award-winning "Life on Earth" series; **Spaceflight**,—the most comprehensive look at man in space, told in four one-hour episodes; Three new wildlife specials on **Survival Specials**; and new chapters in the story of **Wild America**.

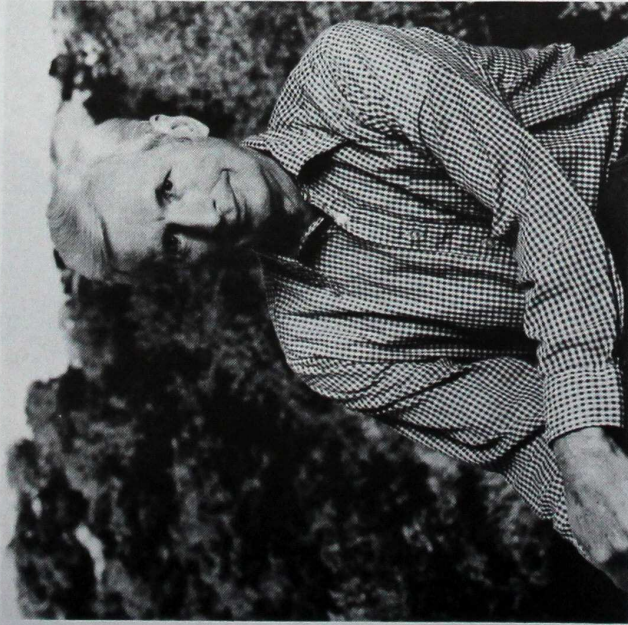
It's a real smorgasbord of video as KNME presents its second season.

COVER:

WILSON HURLEY: "A Wind From Tijeras." 24" x 30" oil on canvas, 1984. Color separations courtesy of Southwest Color Separations.

Artist of the Month

Wilson Hurley



Those who are familiar with Wilson Hurley's work realize two things: first, he loves to paint; and second, he is awed by the beauty of the world. He has said, "The world about us is many times more varied, interesting and overwhelming than anyone's capacity to comprehend and communicate it"—yet he tries. Whether calling attention to the beauty of a sunset, the vastness of a thunderhead or mountain range, or the poetry of a bouquet of fall leaves in a bowl, Hurley puts his own personal signature on the subject. Hurley was born in Tulsa, Oklahoma, in 1924, educated in Leesburg, Virginia; Los Alamos, New Mexico; West Point, and at George Washington University Law School. He flew a tour in the Philippines at the end of World War II, practiced law for thirteen years in Albuquerque, and spent two years as a professional engineer. In 1964 he closed his law practice to devote himself to painting, which had been his lifelong avocation. Hurley's interest is primarily in landscape. He normally works directly from nature, completing studies that he uses in his studio to develop the larger works that he prefers.

On The Cover

"A Wind from Tijeras," 24" x 30" oil on canvas.

When the east wind blows it floods through Tijeras Canyon making most people in Albuquerque miserable. Yet north of town the great wedge of the Sandia Mountain causes that same wind to rise up and condense its moisture so that we can see its path as it breaks and swirls downward over the west face of the mountain like the gigantic crest of a breaking wave.